



turn to the experts™

Creation

53KHET 30-36 & 53QHET 30-36
Cool Only & Heat Pump



SPARE PARTS MANUAL

Carrier is committed to continuously improving its products according to national and international standards to ensure the highest quality and reliability standards, and to meet market regulations and requirements.

All specifications subject to change without prior notice according to Carrier policy of continuous development.



03500000

Rev. (0) - 2011



TABLE OF CONTENTS

	PAGE NO.
1. Unit Model Designation & Identification	1
2. Unit Models & Part Numbers	1
3. Exploded View of Indoor Units 30K	2
4. Part List of Indoor Units 30K	3
5. Exploded View of Outdoor Units 30K	4
6. Part List of Outdoor Units 30K	5
7. Exploded View of Indoor Units 36K	8
8. Part List of Indoor Units 36K	9
9. Exploded View of Outdoor Units 36K	10
10. Part List of Outdoor Units 36K	11

1. UNIT MODEL DESIGNATION & IDENTIFICATION

53	=	Split System
42	=	Indoor Unit
38	=	Outdoor Unit
Q	=	Heat Pump
K	=	Cool Only
H	=	Hi Wall Split System
E	=	Elite family
T	=	High Ambient
30	=	System Size
7	=	Power Supply 220V/1Ph/50Hz
0	=	Wireless Remote Controller
8	=	Carrier Mfg.
F	=	Ionizer

2. UNIT MODELS & PART NUMBERS

HI WALL SPLIT SYSTEMS FOR DOMESTIC MARKET

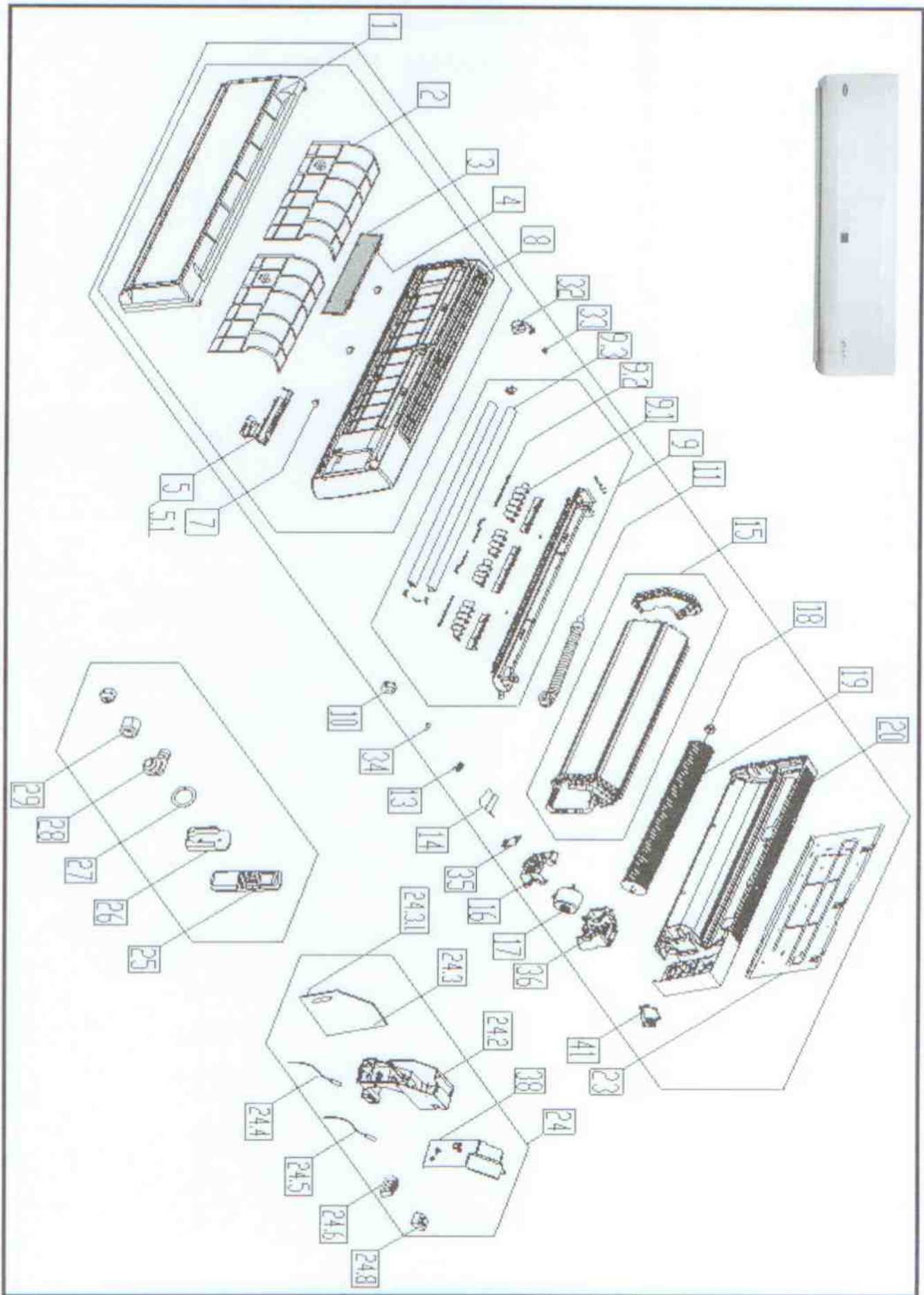
HEAT PUMP	Indoor Unit		Outdoor Unit			
	Model	P/N	Model	P/N	Compressor	
					Type	Supplier
	42QHET30-708F	46302780	38QHET30-708	46302778	Rotary	Mitsubishi
	42QHE36-708F	46302715	38QHE36-708	46302804	Scroll	Copeland

HI WALL SPLIT SYSTEMS FOR STANDARD AMBIENT / HIGH AMBIENT EXPORT MARKETS

HEAT PUMP	Indoor Unit		Outdoor Unit			
	Model	P/N	Model	P/N	Compressor	
					Type	Supplier
	42QHET30-708F	46303961	38QHET30-708	46303257	Rotary	Mitsubishi
	42QHET36-708F	46303963	38QHET36-708	46302848	Scroll	Copeland

COOL ONLY	Indoor Unit		Outdoor Unit			
	Model	P/N	Model	P/N	Compressor	
					Type	Supplier
	42KHET30-708F	46303962	38KHET30-708	46302787	Rotary	Mitsubishi
	42KHET36-708F	46303964	38KHET36-708	46303849	Scroll	Copeland

3. EXPLODED VIEW OF INDOOR UNIT 30K

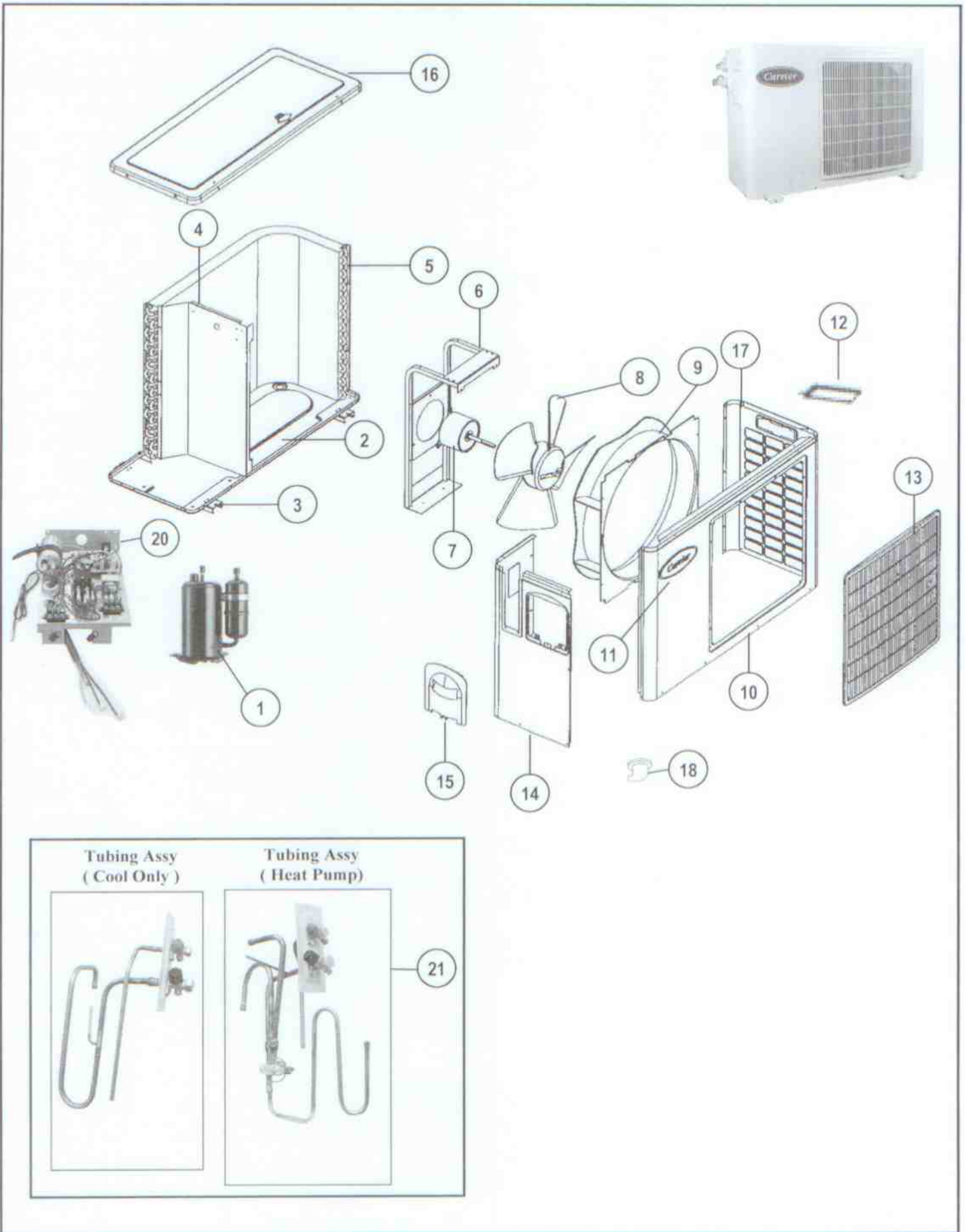


4. PART LIST OF INDOOR UNIT 30K



NO.	PART DESCRIPTION	PART NUMBER	QUANTITY / UNIT		
			42QHE30-718	42KHE30-718	
1	Front panel assy	(201133190169)	02803210	1	-
		(201133190170)	02803232	-	1
2	Air filter	(201130790202)	02803211	2	2
3	Air cleaner	(201130790130)	02803233	1	1
4	Air cleaner holder	(201130790129)	02803212	1	1
5	Display box assy	(2033330A0200)	36319085	1	-
		(2033330A0201)	36319087	-	1
5.1	Display board assy	(2013330A0136)	02502755	1	-
		(2013330A0139)	02502762	-	1
7	Screw cap	(201133190148)	02803231	5	5
8	Panel frame assy	(201133190091)	02803214	1	1
9	Air out frame assy	(201133190119)	02803215	1	1
10	Louver motor	(202400200004)	02400234	1	1
11	Drain hose	(201130000011)	02803216	1	1
13	Sensor clamp	(201131390119)	02803217	1	1
14	Break water	(201130790203)	02803218	1	1
15	Evaporator, assy	(201533090009)	02600598	1	1
16	Motor cover	(201130790127)	02803219	1	1
17	Motor	(202400410648)	02400235	1	1
18	Bearing holder	(201101090004)	02803220	1	1
19	Cross flow fan	(201100290011)	02600599	1	1
20	Chassis	(201133190161)	02803221	1	1
23	Installation plate	(201233190002)	06314190	1	1
24	Electronic control box, indoor unit	(203333190075)	36319086	1	-
		(203333190074)	36319088	-	1
24.2	E-Parts box	(201133190084)	02803222	1	1
24.3	Main control board	(201333190099)	02502756	1	-
		(201333190098)	02502763	-	1
24.3.1	Wires capacitor	(202401290010)	02502757	1	1
24.4	Indoor temp sensor	(202301310079)	02502758	1	1
24.5	Evaporator temp sensor	(202301300080)	02502759	1	1
24.6	Wire join	(202301450128)	02803223	1	1
24.8	Transformer	(202300900170)	02502760	1	1
25	Remote Controller	(203355090231)	02502761	1	-
		(203355091269)	02502764	-	1
26	Holder, Remote Controller	(201155091050)	02803224	1	1
27	Seal	(202720090001)	02803225	1	1
28	Connector for watering	(201101020011)		1	1
29	Copper nut	(201600320003)		1	1
29	Copper nut	(201600320001)		1	1
32	negative ion generator	(202403000029)	02502765	1	1
33	enclosure of negative ion	(201130190088)	02803226	1	1
34	insulated axis	(201131390149)	02803227	2	2
35	Small cover for motor	(201130790124)	02803228	1	1
36	Base for motor	(201130790128)	02803229	1	1
38	E-Parts box's cover	(201130790137)	06314191	1	1
41	Chassis front cover	(201133190089)	02803230	1	1
41	Chassis front cover	(201133190118)	02803231	1	1

5. EXPLODED VIEW OF OUTDOOR UNIT 30K



6. PARTS LIST OF OUTDOOR UNIT 30K

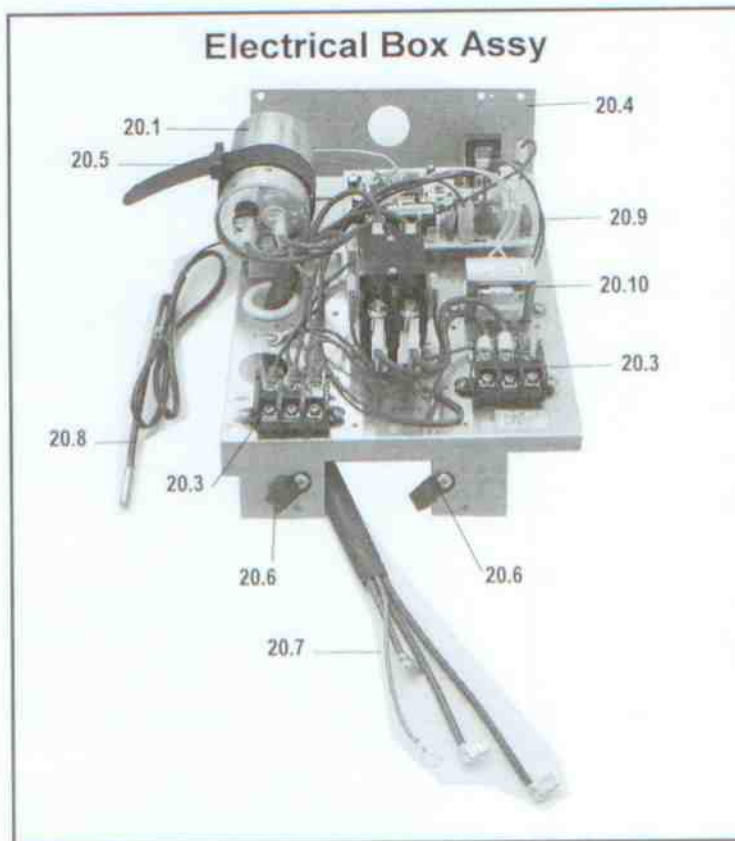
SR	PART DESCRIPTION	PART NUMBER	QUANTITY / UNIT	
			38QHE30-718	38KHE30-718
1	Compressor C/W Grommets & Spacers			
1.1	Mitsubishi Rotary Compressor NHT52VBET	01500249	1	
2	Base Assy	08107402	1	1
3	Supporting Leg Assy	36314043	4	4
4	Partition	08107457	1	1
5	Outdoor Coil & Headers Assy	02600239	1	1
6	Motor Support Assy	08113880	1	1
7	Fan Motor 1/6 HP	02400165	1	1
8	Propeller C/W Socket Screw 8X8 MM	02600441	1	1
9	Orifice Propeller	02803112	1	1
10	Shroud	06307491	1	1
11	Carrier Logo	02900615	1	1
12	Handle Small (201150290006)	02810129	1	1
13	Guard Propeller	02803113	1	1
14	Back Panel	08107409	1	1
15	Service Door	02803106	1	1
16	Cover	08107400	1	1
17	Back Support	06307492	1	1
18	Drain Elbow ①	02803111	1	

Note:

- ① Only for heat pump outdoor units.

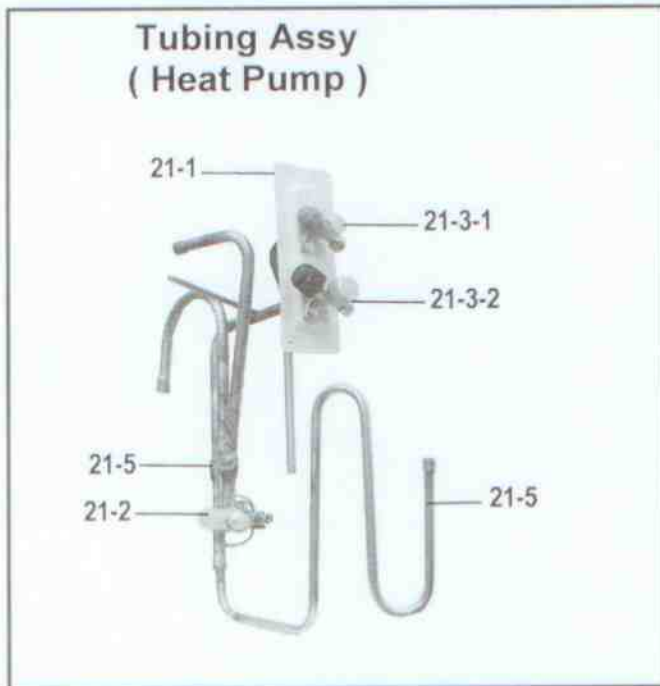
PARTS LIST OF OUTDOOR UNIT 30K (Cont.)

SR	PART DESCRIPTION	PART NUMBER	QUANTITY / UNIT	
			38QHE30-718	38KHE30-718
20	Electrical Box Assy			
20-1	Dual Capacitor 60 + 7.5 MFD/440 VAC	02400385	1	1
20-2	Contacto 2 Poles-25 Amps	02400580	1	1
20-3	Terminal Block 3 Poles-30 Amps	02501315	2	2
20-4	Electrical Box	06307456	1	1
20-5	Capacitor Clamp	02804078	1	1
20-6	Cable Clamp	02802523	1	1
20-7	Electrical Wire Set	02500807		
20-8	Outdoor PCB C/W Screw (201338090026)	02506029	1	-
		(201337990014) 02506038	-	1
20-9	Transformer (202300900099)	02506033	1	1
20-10	Outdoor Coil Sensor (202301300111)	02503228	1	-

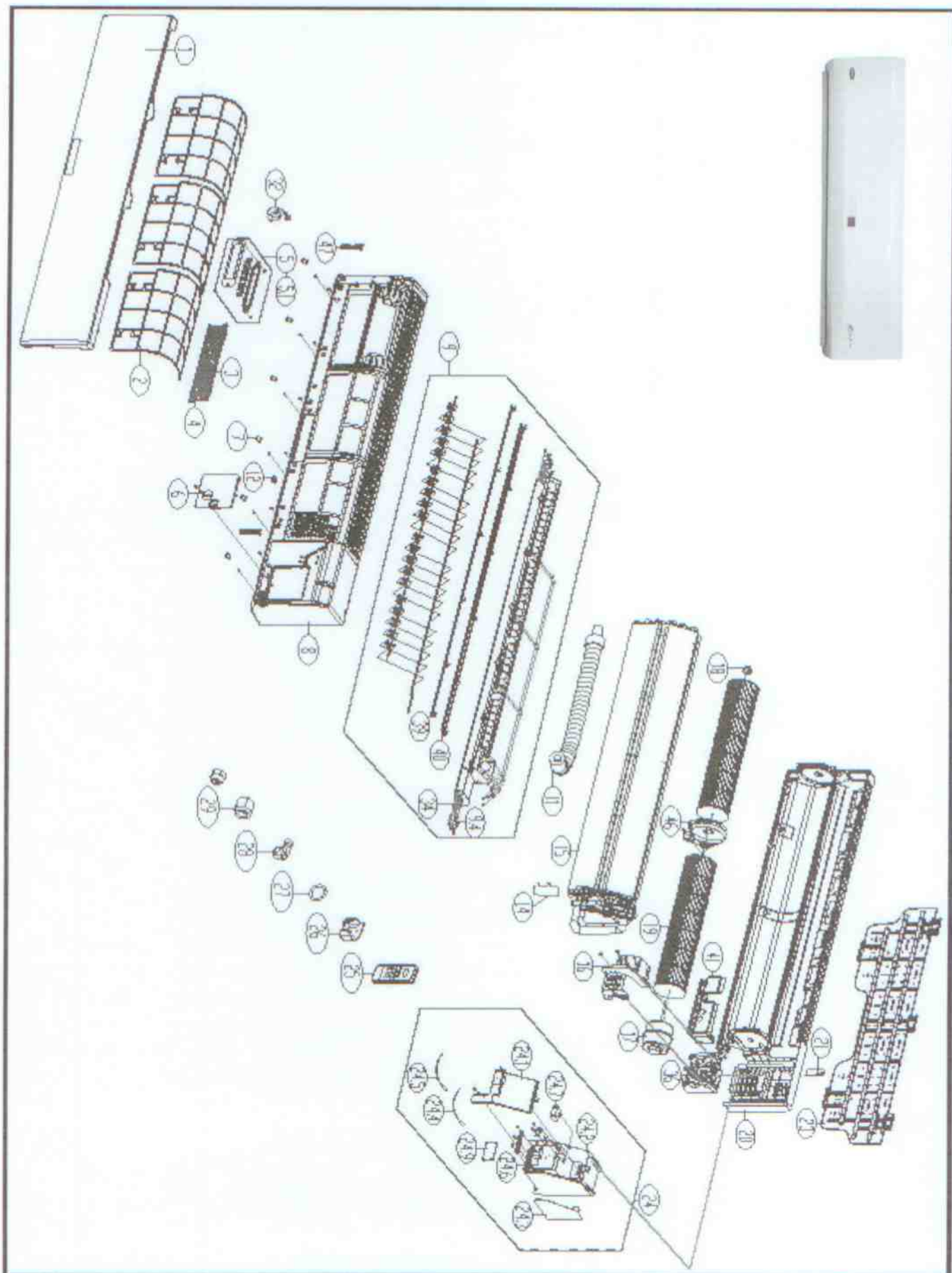


PARTS LIST OF OUTDOOR UNIT 30K (Cont.)

SR	PART DESCRIPTION	PART NUMBER	QUANTITY / UNIT	
			38QHE30-718	38KHE30-718
21	Tubing Assy			
21-1	Support - Flare Valve	08107472	1	1
21-2-1	Reversing Valve SHF-11K-45DT C/W Coil	02200404	1	
21-4	Flare Valves			
21-4-1	Flare Valve 3/8"	02300436	1	1
21-4-2	Flare Valve 5/8"	02300438	1	1
21-5	Tubing Set	36314940	1	-
		36314975	-	1



7. EXPLODED VIEW OF INDOOR UNIT 36K



8. PART LIST OF INDOOR UNIT 36K



NO.	PART DESCRIPTION	PART NUMBER	QUANTITY / UNIT	
			42QHE36-718	42KHE36-718
1	Front panel assembly 201133190197	02803235	1	
2	Air filter 201133190183	02803236	3	
3	Air cleaner 201130100212	02803237	1	
4	Air cleaner holder 201130100217	02803238	1	
5	Display box assembly 203333190086	36319038	1	
5.1	Display board assembly 201319901136	02502850	1	
6	Window cover for repairing 201133190180	02803239	1	
7	Screw cap 201133190182	02803240	6	
8	Frame assembly 201133190195	02803241	1	
9	Air outlet assembly 201133190193	36319039	1	
9.4	Louver Motor (vertical) 202400200137	02400244	1	
9.4	Louver Motor (Horizon. R+L) 202400200136	02400245	2	
11	Drain hose 201101020038	02803242	1	
12	Holder for room sensor 201130490002	02803243	1	
14	Waterproof board 201126290000	02803244	2	
15	Evaporator coil assembly 201533190083	02602579	1	
16	Fan motor cover 201133190185	02803245	1	
17	Asynchronous motor 202400401121	02400246	1	
18	Bearing holder 202733190001	02803246	1	
18	Bearing holder 202730100201	02803247	1	
19	Cross flow fan (L) 201100200308	02803248	1	
19	Cross flow fan (R) 201100200309	02803249	1	
20	Chassis assembly 201133190208	02803250	1	
21	Connecting pipe clamp 201232800001	02803251	2	
23	Installation plate 201233190005	06314192	1	
24	Electronic control box, IDU 203333190100	36319040	1	
24.1	Electric parts box's cover 201133190184	02803258	1	
24.2	Electric parts box 201133190200	02803259	1	
24.3	Main control board assembly 201333190125	02502853	1	
24.4	Indoor temperature sensor 202301300092	02502854	1	
24.5	Evap. Coil temper sensor 202301300077	02502855	1	
24.6	Terminal block 202301450128	02502856	1	
24.7	wires capacitor 202401100353	02502857	1	
24.9	Power module assembly 201333090408	02502858	1	
32	negative ion engender 36K 202403000033	02502859	1	
34	Insulated axis 201132390954	02803252	4	
36	Base for fan motor 201133190186	02803253	1	
39	Horizontal louver, above 201133190192	02803254	1	
40	Horizontal louver, below 201133190191	02803255	1	
41	Chassis Corner 201133190187	02803256	1	
47	Panel Stopper 201132390476	02803257	2	

